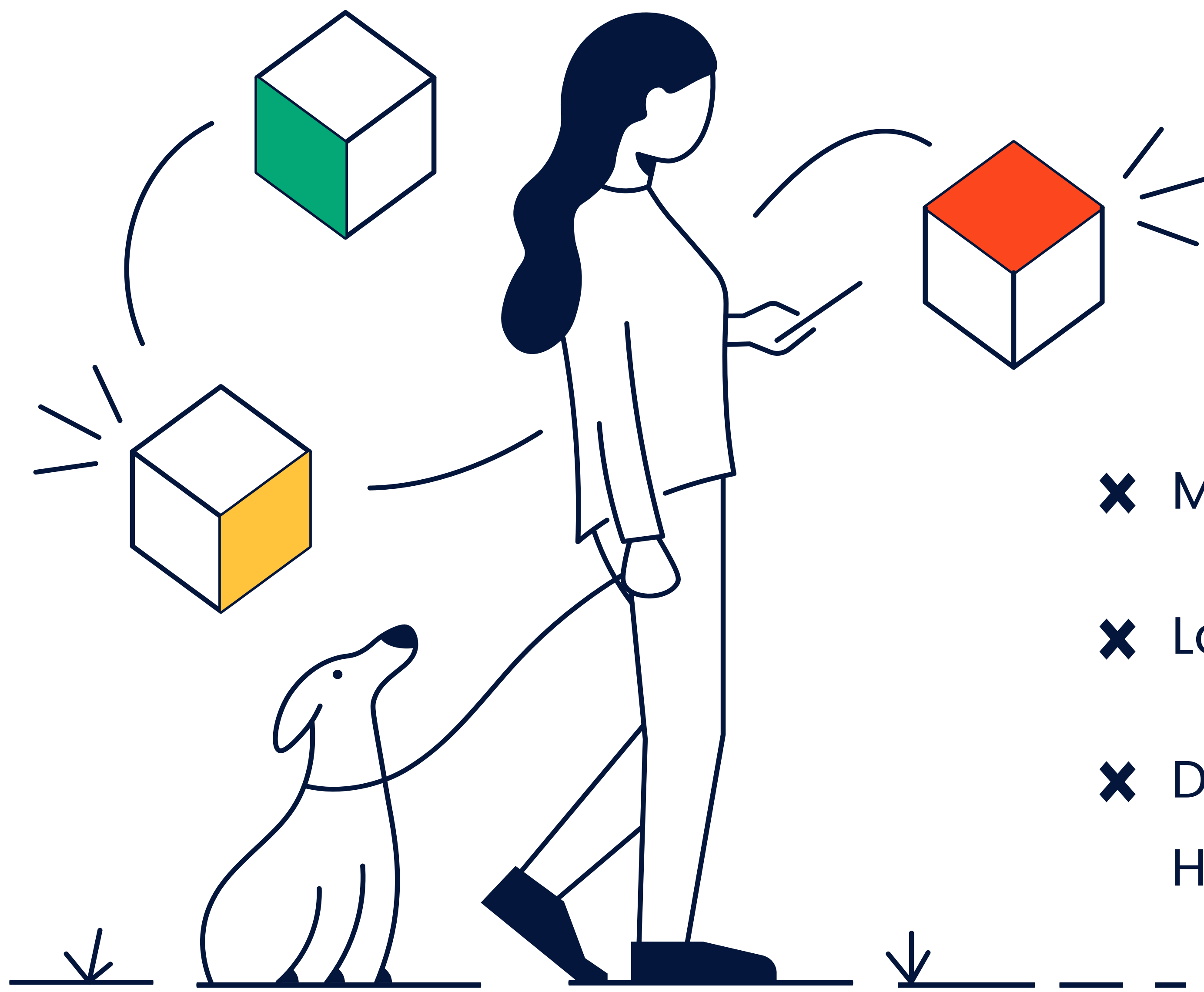
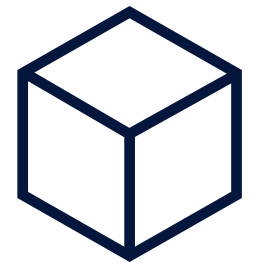


Host on CoLab Kube



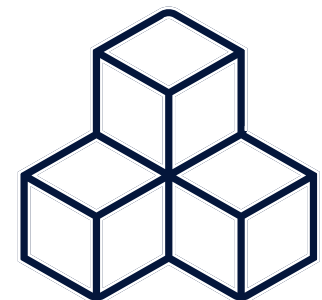
- ✘ Make life easier on your tech team.
- ✘ Lower your maintenance costs.
- ✘ Drupal, WordPress, Shopify, native HTML all supported (and others!)

Micro
\$25/month



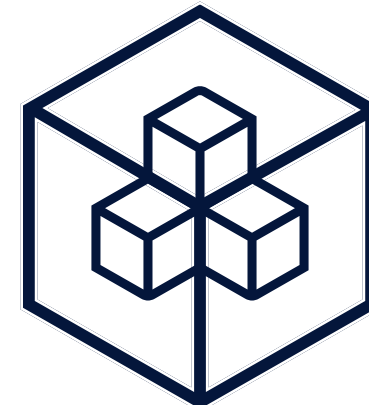
A sandbox server suitable for personal projects

Small
\$50/month



For simple websites with few images and one database

Medium
\$100/month



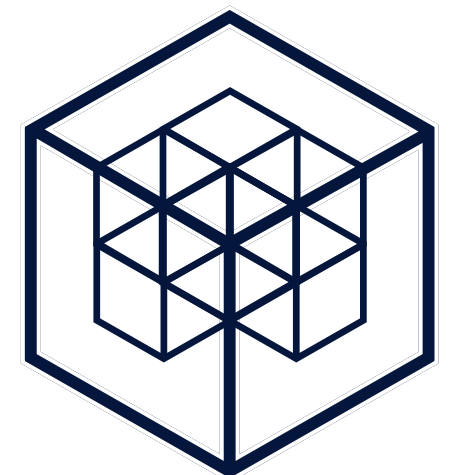
Suitable for e-commerce sites, business applications, general business websites and two databases

Large
\$150/month



Suitable for larger, more complex sites, and four databases

Custom
Let's Talk



Endless possibilities

Online Web and Application Hosting Platform

- "Containerized" server space dedicated to your business
- Strong security
- Developer workflow (built-in automation for moving your sites and applications from development to deployment)
- Can easily upgrade to a larger container when your traffic increases; no migration costs

Examples of Sites We Host

- Business or service websites
- Web applications
- E-commerce stores
- Learning management systems
- Large educational organization websites
- Multiple databases and applications

Included in Your Hosting Fees

Optional domain name registration and renewal service

- Continuous automated monitoring for when your site goes down or is functioning slowly; our international staff pick up the alerts and notify you if something needs to be fixed.
- Our security exceeds industry security standards for commercial sites and apps. Plus we provide a secure vault where all your credentials are safely stored.
- Automated daily backup for peace of mind.
- Easy scalability if your needs increase.



Technical Specifications

Package	Micro	Small	Medium	Large	X-Large	Custom
vCPU	0.5	1	2	4	8	8+
RAM Memory	1Gb	2Gb	4Gb	8Gb	16Gb	16+Gb
Storage	10Gb	20Gb	60Gb	180Gb	540Gb	540+Gb
Bandwidth	4Gb	10Gb	40Gb	120Gb	250Gb	150+Gb

Docker-based deployment with built in monitoring and easy scalability

What is Kube?

Kube is based on Kubernetes, which is a system for managing applications that run in Docker containers. The applications that run in the Kube are always deployed by CircleCI. You define a **kubefile.yaml** to configure deployments. CircleCI includes a repository with branches called staging and production.

Kube runs multiple instances of each cluster for redundancy; the replicas are called pods. On staging, there are usually two pods and on production there are three. This redundancy enables us to support rolling updates (when you deploy, one pod is updated and Kube switches to it when it's ready).

Kube uses Docker to create containers. Developers can run these Docker files locally.

Features

- Private repository with Gitlab, with built in CI/CD pipeline
- Every commit, pull request, merge can be deployed automatically
- Performance monitoring with Kibana
- Detailed logs available via the browser
- SSH access
- Get shell access to your deployed container by registering your public keys
- Web shell with Kubernetes
- Get shell access to your containers via the browser
- Automatic daily backup
- Private vaults for password/security management
- Securely save and access your credentials from our vaults

FREE Discovery Call

Send a message to:
friends@colab.coop

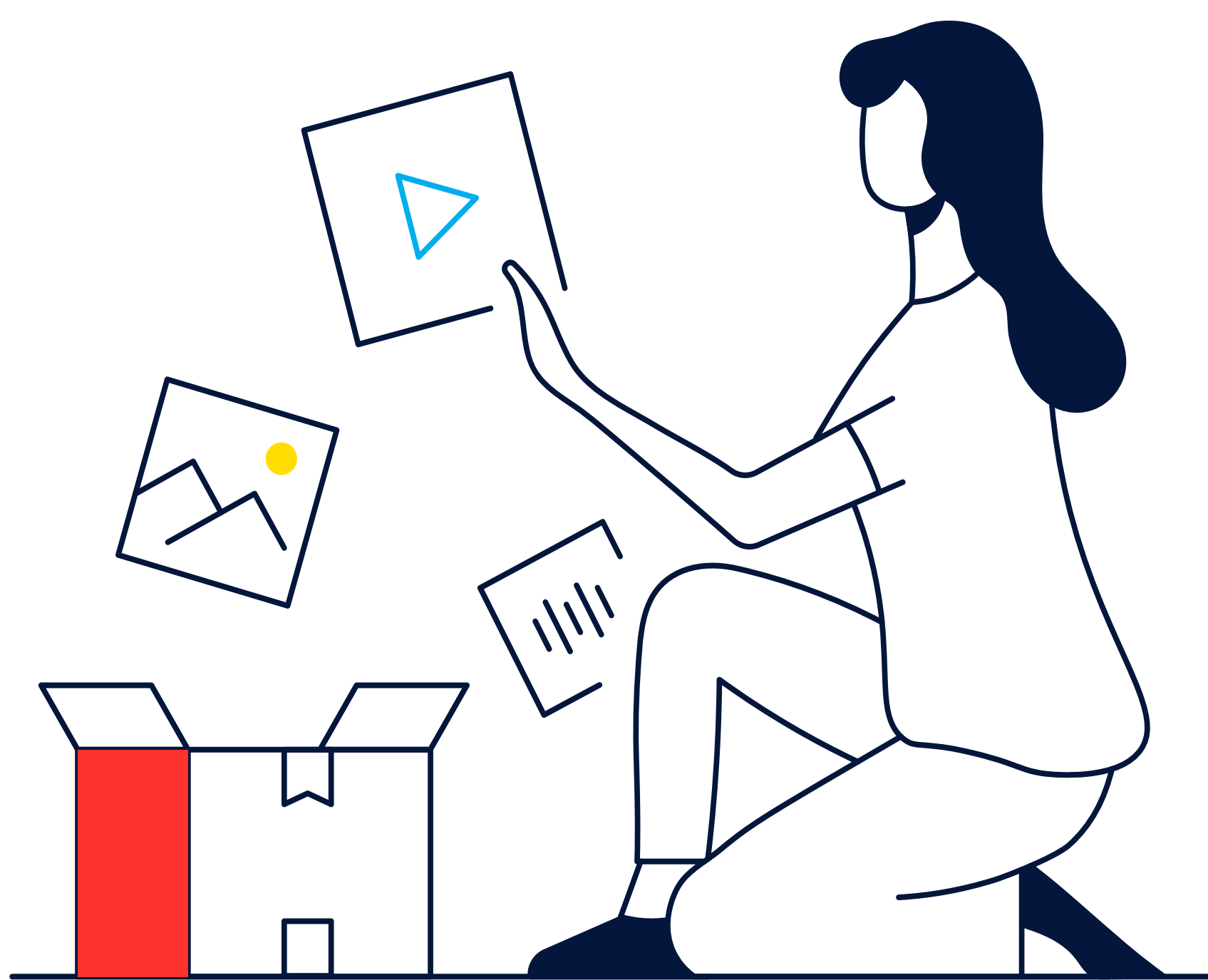
Determine if Kube is right for you!



Is Kube right for you?

Not if...

You are currently (or planning to) use platform-specific hosting, such as Squarespace or WordPress, and your website isn't complex. Kube would not be cost effective.



Consider Kube if...

You would benefit from an end-to-end solution platform that allows you to spin up a Docker-based architecture in minutes without having to worry about service provisioning (such as setting up endpoint/domains, DB connections, firewall, load balancers, etc.).

Free Technical Evaluation Call

Send a message to:
friends@colab.coop

Determine if Kube is right for you!

How Kube is different

Shared hosting or platform-specific hosting tends to offer only one environment, meaning increased risk when modifying the platform

For example, the WordPress Module does not check for server capacity, so shared hosting often hits an issue if the box runs out of resources

We can log into the box and see what the problem is.

What Kube offers

- ❖ Repository (where the code lives)
- ❖ Automated deployment pipeline (so changes can go live immediately)
- ❖ Secret manager (secure place to store credentials)
- ❖ Logging
- ❖ Automatic backup
- ❖ Rollbacks (in case something goes wrong, you can go back to the previous version)
- ❖ Multiple environments (production and staging as default; you can add more)*

* Having multiple environments means we can test modules before making them live, to prevent issues with the production website.



Comparative costs

Other cloud-based hosting services, such as Amazon Web Services (AWS) or Google Cloud Platform, could look less expensive than Kube at their base rate. However, if you need multiple environments, additional costs mount up.

Below is a table of what you would be charged by AWS for multiple environments (prices calculated in Q2 2024), as compared to Kube's Medium Container, which would give you the same functionality and capacity. The total cost for AWS comes to \$212.09/month, while our Medium Container is \$100/month.

Please be in touch if you think we can help. A technical evaluation call is always free.

Sample Evaluation

Type	Cost per hour	Hours per month	Cost per Month	
Server				
EC2 (Dev)	Linux t2.small	0.023	744	\$17.11
	NAT Gateway	0.045	744	\$33.48
EC2 (Demo)	Linux t2.small	0.023	744	\$17.11
	NAT Gateway	0.045	744	\$33.48
Database				
RDS (Dev)	db.t3.micro Single-AZ	0.018	744	\$13.39
RDS (Demo)	db.t3.micro Single-AZ	0.018	744	\$13.39
Networking				
Load Balancer (dev)	Application LoadBalancer	0.0225	744	\$16.74
Load Balancer (Demo)	Application LoadBalancer	0.0225	744	\$16.74
Storage				
Etc.				
Misc.				\$2.00
Server				
EC2 (dev)	GB Data Processed by NAT Gateways	0.045	150	\$6.75
EC2 (demo)	GB Data Processed by NAT Gateways	0.045	30	\$1.35
Database				
RDS (Dev)	provisioned GP3 Storage (Dev)	0.115	100	\$11.50
RDS (Demo)	provisioned GP3 Storage (Dev)	0.115	100	\$11.50
Networking				
Load Balancer (dev)	LCU-Hrs	0.008	16	\$0.13
Load Balancer (Demo)	LCU-Hrs	0.008	2	\$0.02
Storage				
S3 Storage	Storage per GB (dev)	0.023	300	\$6.90
	S3 Actions (Upload) per 1,000 (dev)	0.005	4.5	\$0.02
	S3 Actions (Fetch) per 10,000 (dev)	0.004	1.5	\$0.01
	Storage per GB (demo)	0.023	20	\$0.46
	S3 Actions (Upload) per 1,000 (demo)	0.005	0.8	\$0.00
	S3 Actions (Fetch) per 10,000 (demo)	0.004	0.2	\$0.00
Etc.				
Lambda		0		\$0.00
Code build	Build minutes	0.01	1000	\$10.00
Est. Monthly Development Operational Cost			\$212.09	
Monthly Cost with Kube Medium Box			\$100.00	

